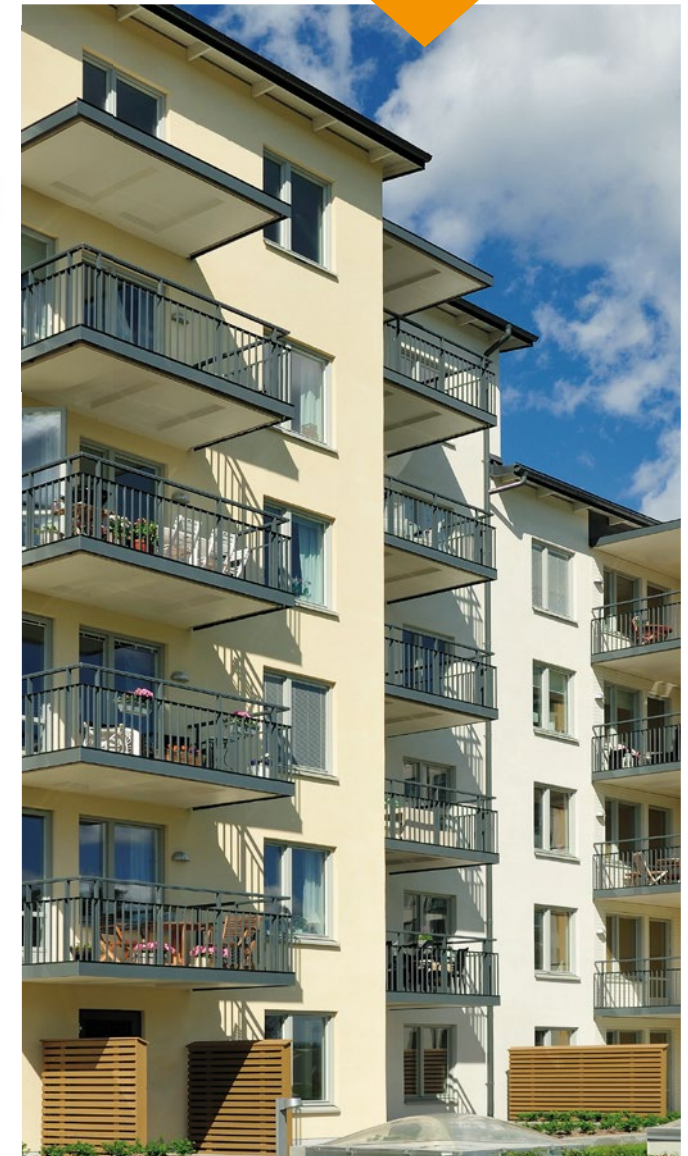


HIGH STRENGTH BLOCK

FEATURES & BENEFITS

- Quality assured manufacture
- Produced nationwide
- Long term durability
- Demonstrate a high level of performance in loadbearing and other structural applications
- Sustainable production process
- Available in solid and hollow format for ultimate versatility
- Provides an excellent key for plastering and rendering
- Full range of accessories
- Cost effective
- Colour coded for easy identification
- Designed to meet the current building regulations and relevant national standards
- Product technical advice available



Size (mm)	440x215 (Solid)	440x100 (Solid / Soap Bar)	440x140 (Solid / Soap Bar)	440x215 (Hollow & U Block)	215x215 (Hollow & U Block)	440x215 L Block	215x100 Stock Brick
Thickness (mm)	65 100 140 300	100	100	215	215	100 (175)	65
Density	>1900kg/m ³	>1900kg/m ³	>1900kg/m ³	>1900kg/m ³	>1900kg/m ³	>1900kg/m ³	>1900kg/m ³
Strength (N/mm²)	15, 20, 30	15	15	10	10	15	15
Finish	Standard	Standard	Standard	Standard	Standard	Standard	Standard
Thermal	0.90 - 1.00W/mK (λ10, Dry Mat)	0.90 - 1.00W/mK (λ10, Dry Mat)	0.90 - 1.00W/mK (λ10, Dry Mat)	0.90 - 1.00W/mK (λ10, Dry Mat)	0.90 - 1.00W/mK (λ10, Dry Mat)	0.90 - 1.00W/mK (λ10, Dry Mat)	0.90 - 1.00W/mK (λ10, Dry Mat)

Disclaimer

Whilst every care has been taken in compiling this technical information guide, the information above is Kilsaran's interpretation of the current building regulations and associated requirements for masonry construction. This document serves merely as a guide to the user. Kilsaran accepts no responsibility whatsoever for any errors made through the use or interpretation of the information contained within this document. It is the responsibility of the client to ensure that all design work and calculations are carried out by an appropriately qualified professional in accordance with all current National and European standards.