

## LevelEase 225 Self Levelling Underlayment

### Description

KPRO Floor LevelEase 225 screed is a standard-setting cementitious levelling compound for use in domestic and commercial applications. The product complies with the requirements of EN 13813 and should be used in accordance with this standard and the manufacturer's instructions.

### Applications

KPRO Floor LevelEase 225 screed is suitable for use internally to prepare substrates, by providing a smooth unbroken surface of 2-25 mm, prior to installation of final floor coverings. Suitable substrates are;

- Sand & Cement screeds
- Concrete
- Ceramic Tiles
- Calcium Sulphate screeds
- Heated Screeds

### Product Use

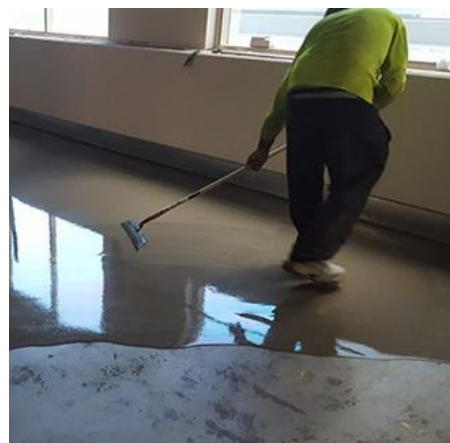
Ensure the supporting concrete base/screed is stable, sound and free from any dust, dirt or grease. The supporting base should then be primed using a suitable acrylic or water-based primer prior to application. Priming of the substrate is critical to ensure sufficient flow life of the compound and to minimise entrapped air bubbles rising through the fresh compound material.

**Preparation:** Before installing KPRO Floor LevelEase 225, ensure that concrete, sand-cement, and calcium sulphate screeds are at least 28 days old and have dried sufficiently. The residual moisture content should not exceed 4% CM (approximately 6% Tramex or gravimetric weight percent). For screeds with underfloor heating, the maximum moisture content is 3% CM (approximately 4.5% Tramex or gravimetric weight percent). Any joints in the substrate must be mirrored through the KPRO Floor LevelEase 225 layer. Additionally, suitable perimeter strips should be used at edges and junctions to contain the fluid material and prevent movement during curing.

For heated screeds, it is crucial to commission the heating system prior to installation. After commissioning, turn off the heating system and allow it to cool for at least 4 days before applying KPRO Floor LevelEase 225.

**Priming:** All surfaces must be thoroughly primed to ensure optimal performance of the leveling compound. Priming is essential to maximize the working time, maintain the flow life, and enhance adhesion, while also preventing air bubbles from rising through the compound. It is crucial to adhere to the manufacturer's specified drying time for the primer to achieve the best results.

**Mixing:** To prepare the KPRO Floor LevelEase 225, mix one 20kg bag of the material with 4.0 to 4.3 litres of clean, potable water. It is important not to exceed the recommended water amount, as this may result in reduced strength and compromised performance. Begin by pouring the measured water into a mixing bucket. Gradually add the dry powder to the water while continuously mixing using a mechanical paddle mixer. Mix thoroughly until a smooth, lump-free, and homogenous consistency is achieved. After mixing, allow the fresh material to rest for 1 minute to allow any trapped air to escape. Then, stir or re-agitate the mixture to ensure optimal workability. For larger areas, it is recommended to use a suitable screed pump to ensure efficient and uniform application. If an application thickness greater than 25 mm is required, use KPRO Floor LevelEase 250 instead, as it is specifically designed for thicker layers. Always follow the manufacturer's guidelines and ensure proper preparation of the substrate before applying the product.



### Benefits

- Consistently high-quality mix
- Walk on in 6 hours
- Polymer Modified
- Extended 40 minute working time
- Low shrinkage and crack resistance
- Convenient and User-Friendly
- Can be used from 2mm – 25mm depths
- Solvent free

### Laying Depths

Screed Thickness	Depth
Minimum	2mm
Maximum	25mm*

### Approximate Drying Times<sup>†</sup>

Screed Thickness depth	Time for covering
Up to 5 mm	12 hours
Up to 25 mm	24 hours

### Approximate Yield

Consumption	Kg / sqm	Yield Bag
2 mm	3.1	6.3 sqm
3 mm	4.7	4.2 sqm
5 mm	7.8	2.5 sqm
10 mm	15.6	1.2 sqm

### Application Temperatures



5° to 30° C

### Health & Safety

Please refer to the relevant Material Safety data sheet online at [www.kilsaran.ie](http://www.kilsaran.ie).

### Pack Size

- 20kg premixed bags

### Get in touch:

ROI: T: 01 801 3484  
UK: T: 0161 872 8899

Place an Order: [orders@kilsaran.ie](mailto:orders@kilsaran.ie)  
Customer Service: [csteam@kilsaran.ie](mailto:csteam@kilsaran.ie)

Tech Support: [techsupport@kilsaran.ie](mailto:techsupport@kilsaran.ie)  
Website: [www.kilsaran.ie](http://www.kilsaran.ie)

**Placing:** Pour the mixed KPRO Floor LevelEase 225 onto the prepared substrate, allowing it to flow and self-level within the first 15 minutes of its 20-30 minute working time. Use a steel trowel or squeegee to spread the compound evenly to the desired thickness. Use a spiked roller to release trapped air bubbles and achieve a smooth finish. During the 20–30-minute working time, a steel finishing float can be employed for precise feathering and edge refinement.


**Curing:** Protect the freshly applied surface from drafts until it hardens. Impermeable floor coverings can be installed after 12 hours\*, depending on the material's thickness, room humidity, and temperature. Refer to the drying times listed in the previous page table for guidance.

## Technical Data

KPRO Floor LevelEase 225 screed is produced in an ISO 9001 quality-controlled environment to the requirements. The product is tested and marketed in accordance to CPR 305/2011 and complies with classification CT-C25-F6 in accordance to EN 13813.

Characteristic	Data Value			
	4 Hr	1 Day	7 Day	28 Day
Compressive Strength	≥ 6 N/mm <sup>2</sup>	≥ 8 N/mm <sup>2</sup>	≥ 17 N/mm <sup>2</sup>	≥ 25 N/mm <sup>2</sup>
Flexural Strength	≥ 2 N/mm <sup>2</sup>	≥ 3 N/mm <sup>2</sup>	≥ 4 N/mm <sup>2</sup>	≥ 6 N/mm <sup>2</sup>
Working Time (20°C)	20-30 mins			
Flow Life (20°C)	15 mins			
Initial Set	50 mins			
Final Set	2 hours			

Product Information	
Form:	Powder
Colour:	Dark Grey
Hazard Information:	Contains cement – Consult Safety Data Sheet
Cleaning:	After completing your work, it is recommended to wash the tools immediately with water before the mortar begins to set.
Packaging:	20 kg paper bag.
Storage Conditions:	Store mortar in a dry, cool environment. Keep mortar away from moisture and direct contact with water.
Shelf Life:	12 months

 Kilsaran Concrete, Piercetown Dunboyne Co. Meath Ireland 24 EN 13813 CT – C25 – F6 Cement based levelling screed material for internal use	
Compressive Strength	C25
Flexural Strength	F6
Reaction to Fire	A1
Release of Corrosive Substances	CT

## Get in touch:

ROI: T: 01 801 3484  
 UK: T: 0161 872 8899

**Place an Order:** [orders@kilsaran.ie](mailto:orders@kilsaran.ie)  
**Customer Service:** [csteam@kilsaran.ie](mailto:csteam@kilsaran.ie)

**Tech Support:** [techsupport@kilsaran.ie](mailto:techsupport@kilsaran.ie)  
**Website:** [www.kilsaran.ie](http://www.kilsaran.ie)